

8-slot switch chassis for test equipment

CHAS-8SLO-4U-01

KEY FEATURES

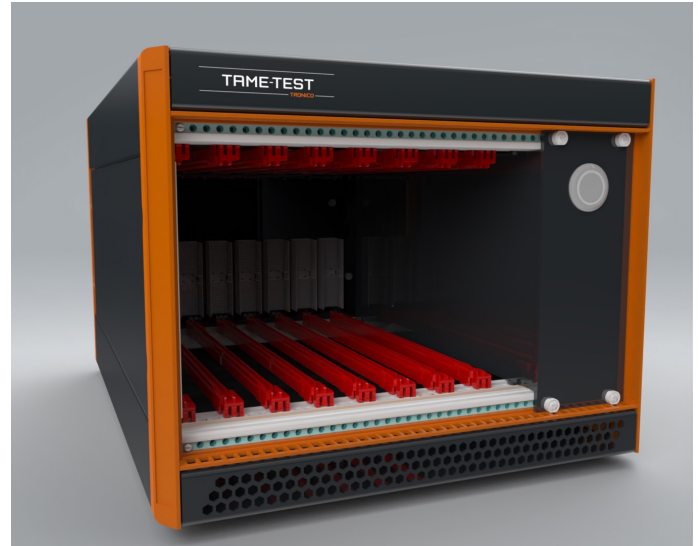
- Internal matrix board 12x4 2-pole
- 8 common internal bus, 2-poles between all modules
- 12 channels: 4 x BNC connectors, 8 x 2-pole banana plugs
- Supports Tame-Test modules :
 - Multiplexers
 - Matrix
 - Custom modules
- SCPI commands compliant
- Ethernet 100 Mbps interface
- LabView driver supplied
- Supports 8 user slots
- Case with integrated ventilation (2 x 1/2 U)
- Conforms with DIN EN 62368-1
- Low audible operating noise

DESCRIPTION

Tame-Test's **CHAS-8SLO-4U-01 modular chassis** offers a sophisticated solution for seamlessly interconnecting various instruments with the 8-module MUX system. Thanks to its 8 dual-pole common buses, this chassis facilitates streamlined connections and optimizes signal routing.

This solution allows up to 12 instruments connected to the chassis's back panel to access all channels within the multiplexers, with a total capacity of up to 384 channels, each supporting 2 poles. This versatile setup leverages the power of Tame-Test's **TT-MUX-24C-2P-2B-01 multiplexers**, ensuring efficient and comprehensive connectivity for your testing needs.

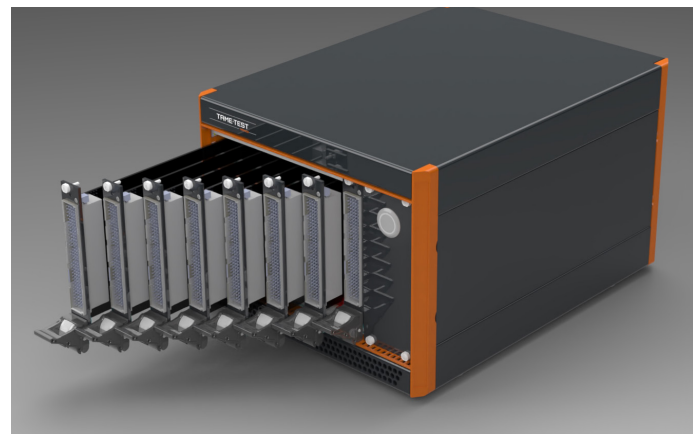
The Ethernet interface empowers modules control via a LAN connection, facilitated by an HMI tool provided alongside and a driver that can be utilized within test sequences.



To ensure optimal performance and longevity, the chassis is equipped with a reliable protection and cooling system. It effectively manages heat dissipation. Thanks to an efficient cooling mechanism that maintains an ideal operating temperature.

CHAS-8SLO-4U-01 chassis is standing at a height of 4U and half rack width. This space-saving design maximizes the utilization of your test bench setup.

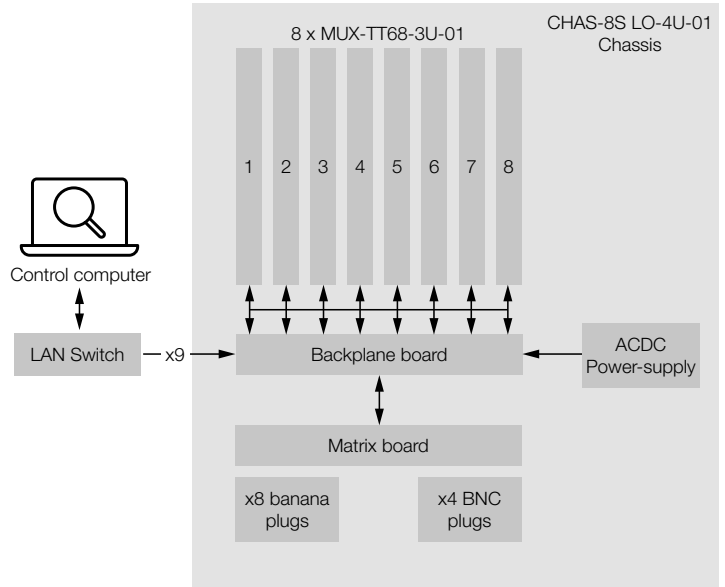
For detailed information regarding the TT-MUX-24C-2P-2B-01 multiplexer, please refer to its data-sheet (sold separately).



8-slot switch chassis for test equipment

CHAS-8SLO-4U-01

Plugging eight TT-MUX-24C-2P-2B-01 multiplexer modules to CHAS-8SLO-4U-01 chassis provides an advanced switching system. This system empowers instruments on test benches to have access to 384 channel-2pole.



TECHNICAL SPECIFICATIONS

ELECTRICAL SPECIFICATIONS

Input Voltage	220 – 240 V AC
Input Current	4 A
Power Rating	50 W
Frequency Rating	50 - 60 Hz

MECHANICAL SPECIFICATIONS

Dimensions	Width: 235.5 mm Height: 177 mm (4U) Depth: 315.5 mm
Weight	3.5 kg (if empty)
Number of slots	8
Protection Rating	IP20

OPERATING CONDITIONS

Operating temperature	0°C to +55°C
Humidity	Up to 90%
Altitude	5 000 m

COOLING

Fan	1
Airflow	36 m³/h
Air exhaust via perforation in cover plate	

ACOUSTIC NOISE EMISSIONS

With fans on maximum	47 dB (A)
----------------------	-----------

LAN INTERFACE

Connectors	9 x RJ45 connector
Connection Speed	100 Mbps
Communication Protocol	SCPI commands

STORAGE AND TRANSPORT CONDITIONS

Operating temperature	-20°C to +75°C
Humidity	Up to 90%
Altitude	15 000 m

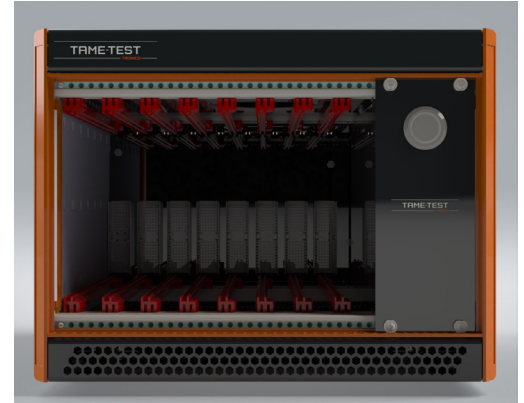


8-slot switch chassis for test equipment

CHAS-8SLO-4U-01

FRONT PANEL HMI

8 slots for TT-MUX-24C-2P-2B-01
ON/OFF push button
Led indicator



BACK PANEL HMI

9 RJ45 connectors
CAN bus connector (optionnal)
4 BNC connectors
8 x 2 peer of banana jack female connectors
Input power supply 230 AVC
Grounding terminal



SAFETY, CE & ROHS COMPLIANCE

CHAS-8SLO-4U-01 chassis is fully CE compliant and meet applicable EU directives, Low Voltage Safety directive EN 61010-1:2010 and EMC directive EN 61326-1:2013

CHAS-8SLO-4U-01 chassis is also compliant the European Restriction of Hazardous Substances directive (RoHS).

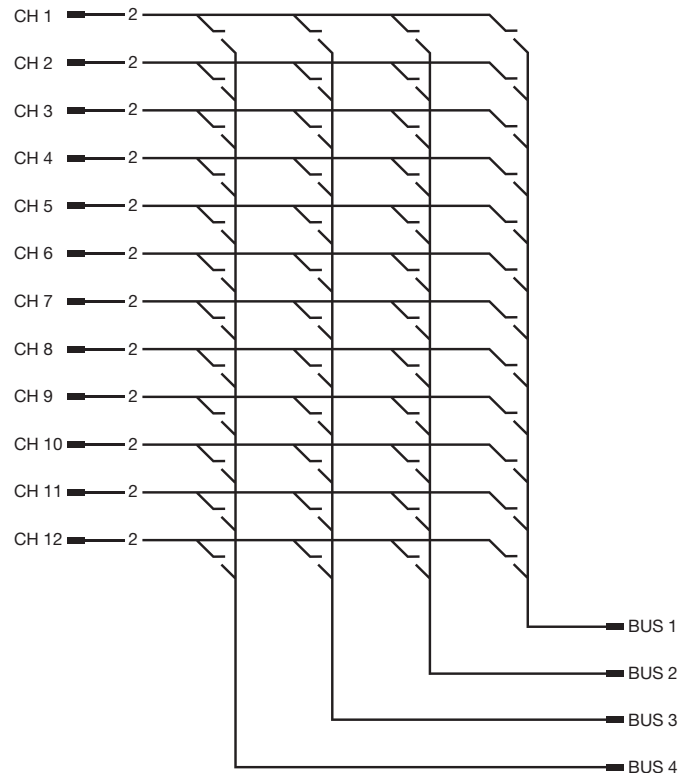
8-slot switch chassis for test equipment

CHAS-8SLO-4U-01

INTERNAL MATRIX SPECIFICATION

SWITCHING SPECIFICATION

Poles	2 (each bus is a 2-wire connection)
Switch type	Electro-mechanical
Max switch voltage	220 VDC / 250 VAC
Max power	62.5 VA, 60 W
Max switch current	2A
Initial on path resistance	<50mΩ at 10mA/30mV
Minimum voltage	100μV
Differential thermal offset	<10μV
Operate Time	typ. 1 ms, max. 3ms
Release time	typ. 1 ms, max. 3ms
<ul style="list-style-type: none"> without diode in parallel with diode in parallel 	typ. 3 ms, max. 5ms typ. 1 ms, max. 5ms
Bounce time max	typ. 1 ms, max. 5ms
Expected life (operations)	
<ul style="list-style-type: none"> resistive, 125 VDC / 0.24A - 30 W resistive, 220 VDC / 0.27A - 60 W resistive, 250 VAC / 0.25A - 62.5 VA resistive, 30 VDC / 1A - 30 W resistive, 30 VDC / 2A - 60 W 	min. 5x10 ⁶ operations min. 1x10 ⁶ operations min. 1x10 ⁶ operations min. 5x10 ⁶ operations min. 1x10 ⁶ operations



PRODUCT CUSTOMIZATION

The CHAS-8SLO-4U-01 chassis can be tailored to your needs and customized according to your specifications: the chassis itself, the matrix and multiplexer(s).

Please note that cables are not delivered with the chassis.

They can be supplied on request (sold separately).

